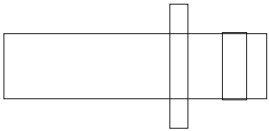


JAY LEE JEEWI LEE



BETWEEN VOIDS

JUNE 12 — AUGUST 13 2025

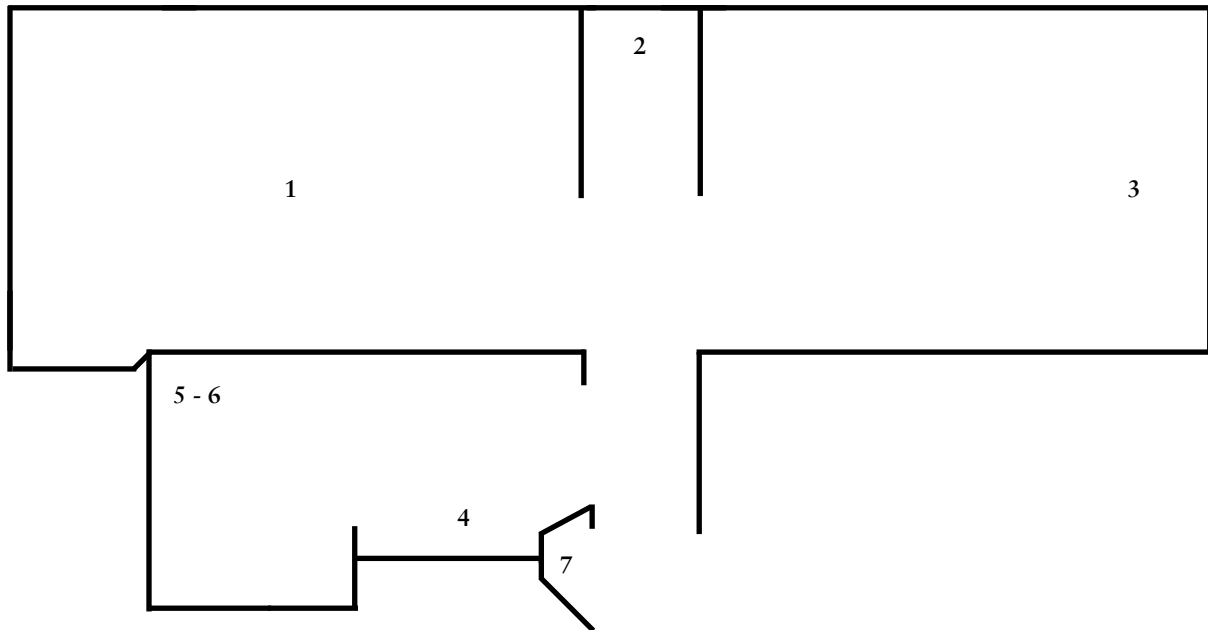
OPENING RECEPTION JUNE 11, 7—9PPM
with a contribution by RYAN QUIFREE VAN WIJK

OBELUS 1
49 Forster Str.
10999 Berlin DE

Obelus is pleased to present *Between Voids*, a duo exhibition by Jay Lee and Jeewi Lee.

In *Between Voids*, Lee and Lee engage the liminal interplay of permanence and absence departing from the specific spatio-temporal context of the vacant flat currently hosting Obelus' first location in Berlin. Their collaboration weaves a dialogue whose message is whispered, whose conclusions are psychic as much as structural. Shaping and carving the angles around our notions of presence, illuminating what it means to inhabit, to derive, to recognize, to remember, and to acknowledge what is unseen.

<i>As a child I was often terrified to wash my hair because I</i>			<i>In Their</i>
<i>had to keep my eyes closed to avoid getting soap into my</i>	<i>Stories</i>	<i>Remnant</i>	<i>Restraint</i>
<i>eyes.</i>	<i>Between</i>	<i>Sediment</i>	<i>Peculiar</i>
<i>Every time I did, the world around me would fall into a</i>	<i>Departure</i>	<i>Known</i>	<i>Silent</i>
<i>perceived non-existence, as I could no longer be sure if it</i>		<i>Absence</i>	<i>Melancholy</i>
<i>would still be there when I opened my eyes again. And it</i>	<i>Brink</i>	<i>White</i>	<i>Midst Of</i>
<i>did; but what if what didn't use to be there, what if that</i>			<i>The City</i>
<i>too, were to appear in front of</i>	<i>Gut</i>	<i>Vacant</i>	<i>A Void,</i>
<i>my eyes then?</i>	<i>District</i>	<i>Gold</i>	<i>Where</i>
<i>The void would start to fill up with fear,</i>	<i>Epitomizes</i>	<i>Considered</i>	<i>Into Presence</i>
<i>giving form to the unlikeliest of possibilities, fashioned like</i>	<i>Few</i>	<i>Purification</i>	<i>Space</i>
<i>monsters showing up to haunt me, and end me. What if I</i>	<i>Others</i>	<i>Filled</i>	<i>Empty</i>
<i>opened my eyes and suddenly, there they'd be, in front of</i>	<i>Gestures</i>		
<i>me?</i>	<i>Responds</i>	<i>Projection</i>	<i>haunt</i>
<i>What we perceive as empty is often not empty of activity.</i>		<i>Surface</i>	
<i>The very mystic experience of being unperceivable and</i>		<i>Explores</i>	<i>Leftovers</i>
<i>empty triggers our imagination to</i>	<i>Sockets</i>	<i>In-Between</i>	
<i>fill the void with possibilities.</i>	<i>Discoloration</i>	<i>States</i>	<i>Appearance</i>
<i>I'm highlighting these anticipated activities: in order to</i>	<i>Walls</i>		
<i>navigate in the room, one must fall into</i>	<i>Was</i>		<i>Veil</i>
<i>inactivity(motionless) to see where they are going</i>	<i>Ab Alone</i>	<i>Unknown</i>	
<i>Every action can only happen once observation during</i>	<i>Mother-Of-</i>	<i>Reflecting</i>	<i>Embodied</i>
<i>inactivity has been performed.</i>	<i>Presence</i>		



- | | |
|---|---|
| <p>1 Jay Lee
<i>Untitled</i>
2025, lamp, Raspberry Pi, infra-red light,
NoIR camera, relay
Jeewi Lee
<i>Void (listen)</i>
2025, abalones, size variable</p> | <p>4 Jeewi Lee
<i>Plate</i>
2021, site specific work for BY THE SEA (Kunsthalle
Wilhelmshaven former second harbour entrance,
3 October 2021, 350 x 67 cm</p> |
| <p>2 Jeewi Lee
<i>White Soil</i>
2025, seasalt and adhesive, 350 x 67 cm</p> | <p>5-6 Jeewi Lee
<i>Sunken (glimpse)_01, _02</i>
2025, mother of pearl, lime plaster, wood,
53 x 41 cm, 41 x 32 cm</p> |
| <p>3 Jay Le
<i>Being Walked In On, Unnoticed</i>
2025, cardboard, ink on paper, size variable</p> | <p>7 Jay Lee
<i>Whisper</i>
2014, single channel digital video, 56 seconds</p> |